

CMX-200

VESSEL WASHING SYSTEM

Because every
batch deserves a
clean start

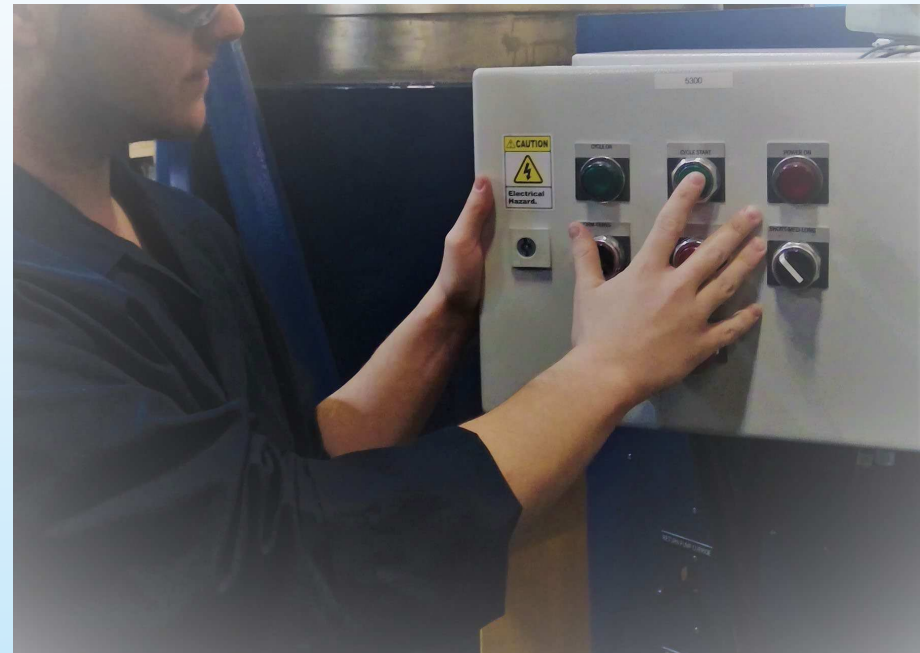
AUTOMATED TANK CLEANING

Wash cycles 5-15 minutes

FROM THIS



TO THIS



Why a TANK washing system?



Cleaning a tank as fast as 5 minutes



Reducing cleaning time up to 80%



Saving thousands of gallons of water &/or solvent yearly



Reducing wastewater &/or HazMat waste

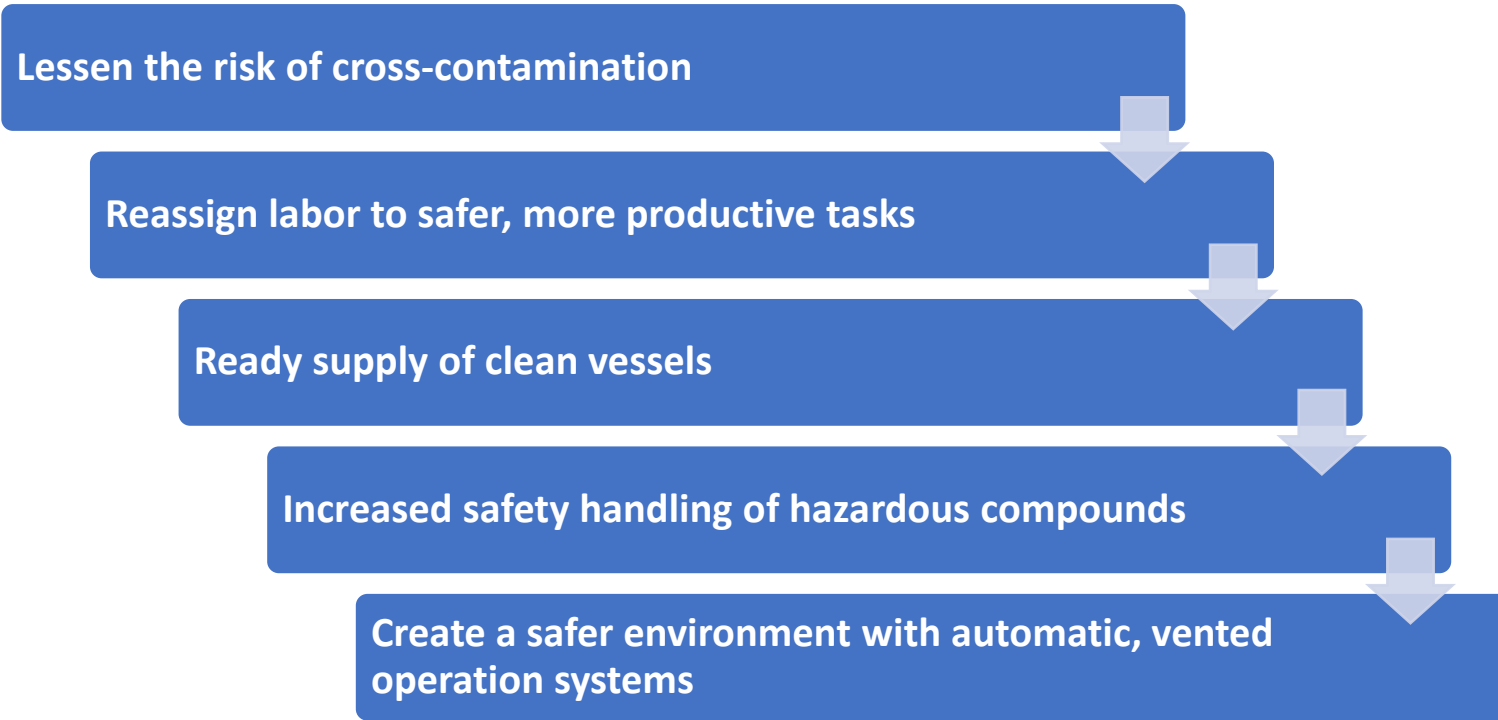


Decreasing energy use – especially when using heated water



Sustainability

Why a TANK washing system?

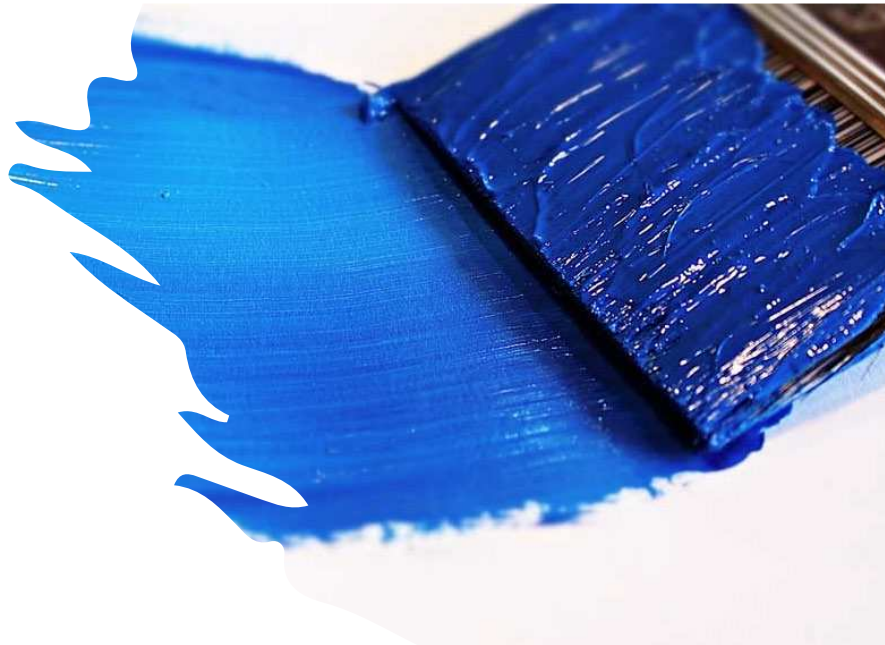


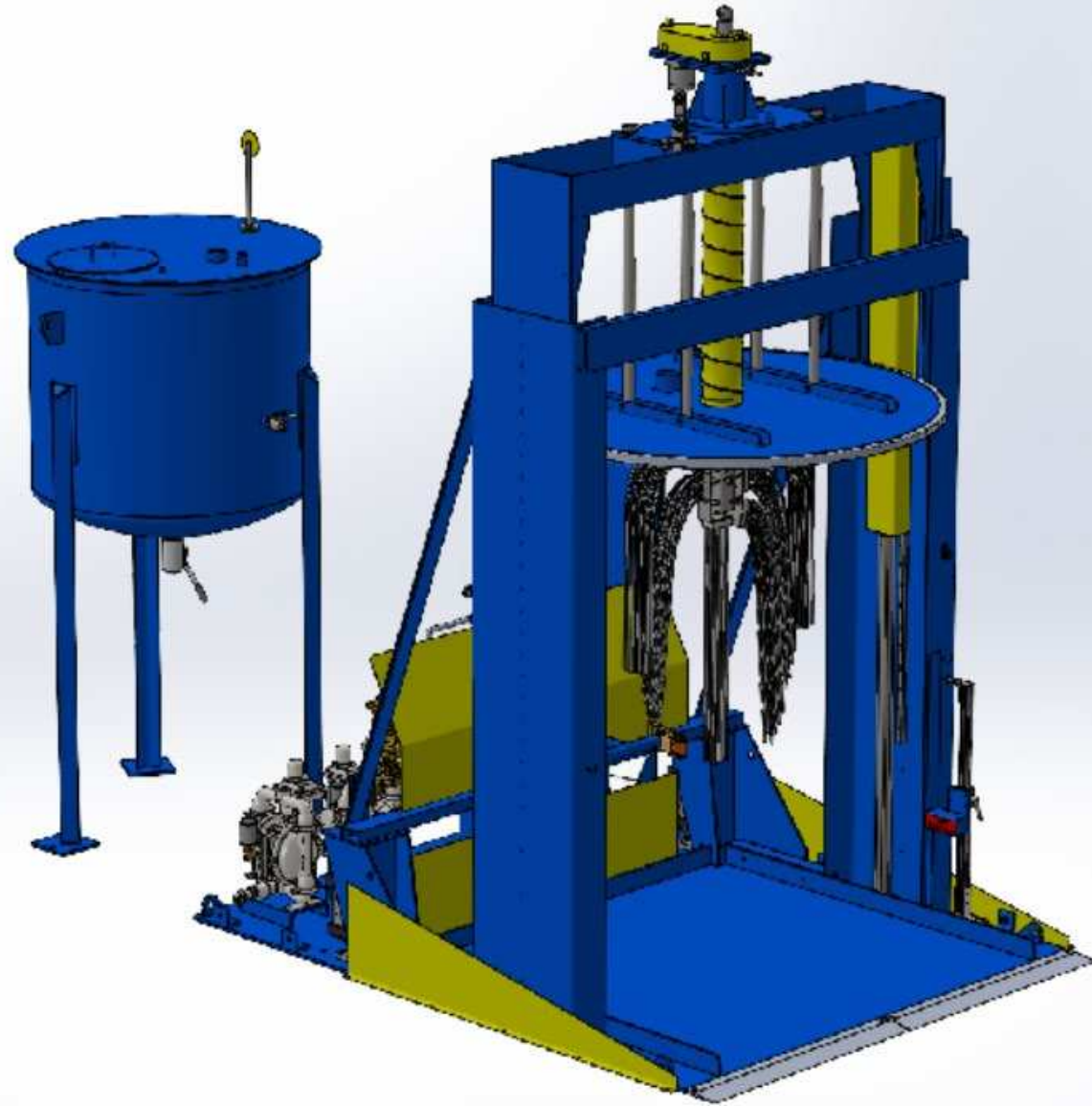
Enhanced Operations



Industry Applications

- Paints & Coatings
- Inks
- Agrochemicals
- Cosmetics
- Adhesives
- Ceramics
- Renewable Energy
- And More...





MACHINE REQUIREMENTS

- 460 Volt incoming power
- 80 PSI minimum air pressure
- Wash solution/solvent
- 82" W X 120" L X 195" H area
- Additional room for 250-Gallon reservoir

FEATURES



Standard system
washes 36" to
60" diameter
vessels

Skid mounted for
compact footprint

Dual high-
pressure hoists
for maximum
stability

Cover for vapor
and liquid
containment

Adjustable spray
nozzles

Tilt device for
flushing

One-piece
bracket for quick
brush changes

Caustic
applications
available

Intrinsically safe
control system for
XP environments

www.hockmeyer.com

VESSELS

tanks

totes

drums

- Vessels must be portable
- Open top
- Forkrails or Casters
- 36"D to 60"D
- 36" OAH to 58"OAH



LID

Chemical resistant cover assembly with liner safely controls the release of vapors and liquid solvents

- Available in:
 - ☐ Polyethylene
 - ☐ Teflon

FLEXIBLE brush assembly with heavy duty Nylon bristles for:

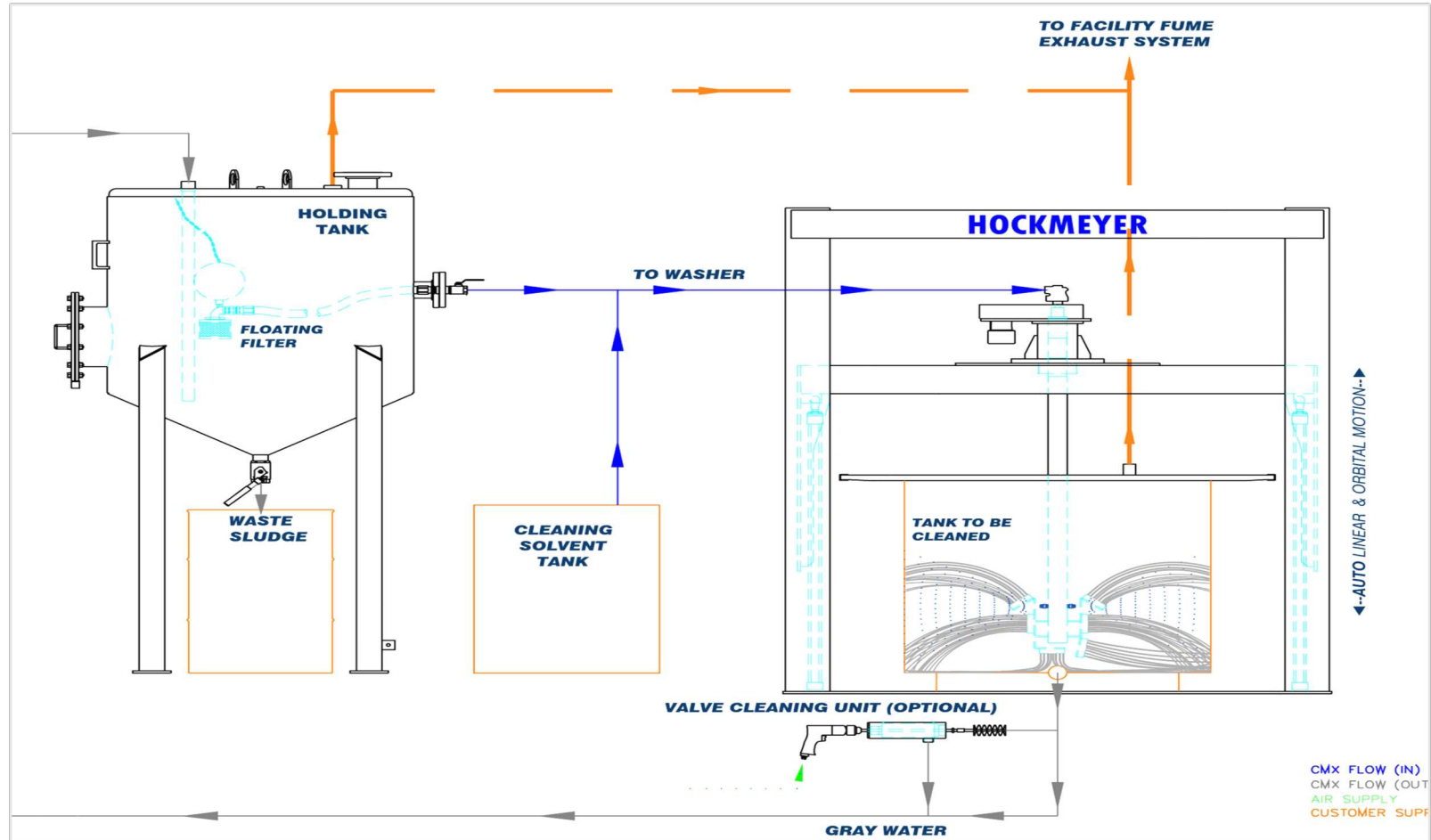
- ☐ Non-conductive
- ☐ Good fatigue resistance
- ☐ Low water absorption rate
- ☐ High chemical resistance



**WE OFFER CUSTOM BRUSH DESIGNS
TO FIT SPECIAL-SIZED TANKS
AND REMOVE SPECIAL MATERIALS**



Flow



OPERATOR CONTROLS



Push Button Station

Start and stop push-buttons
Cycle length selector switch
Tote adapter switch
Power Indicator light
Cycle Indicator light
Emergency stop push-button



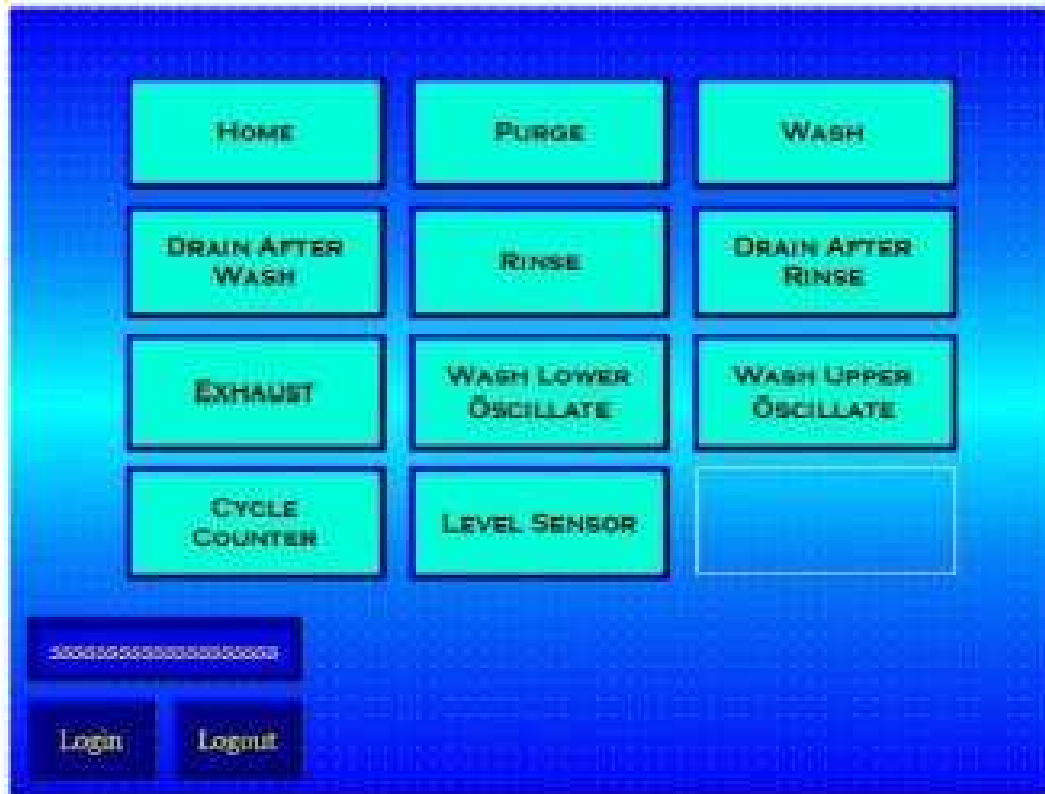
PLC Interface

User friendly touchscreen display
Programming access to simplify troubleshooting
Password protected parameter changes

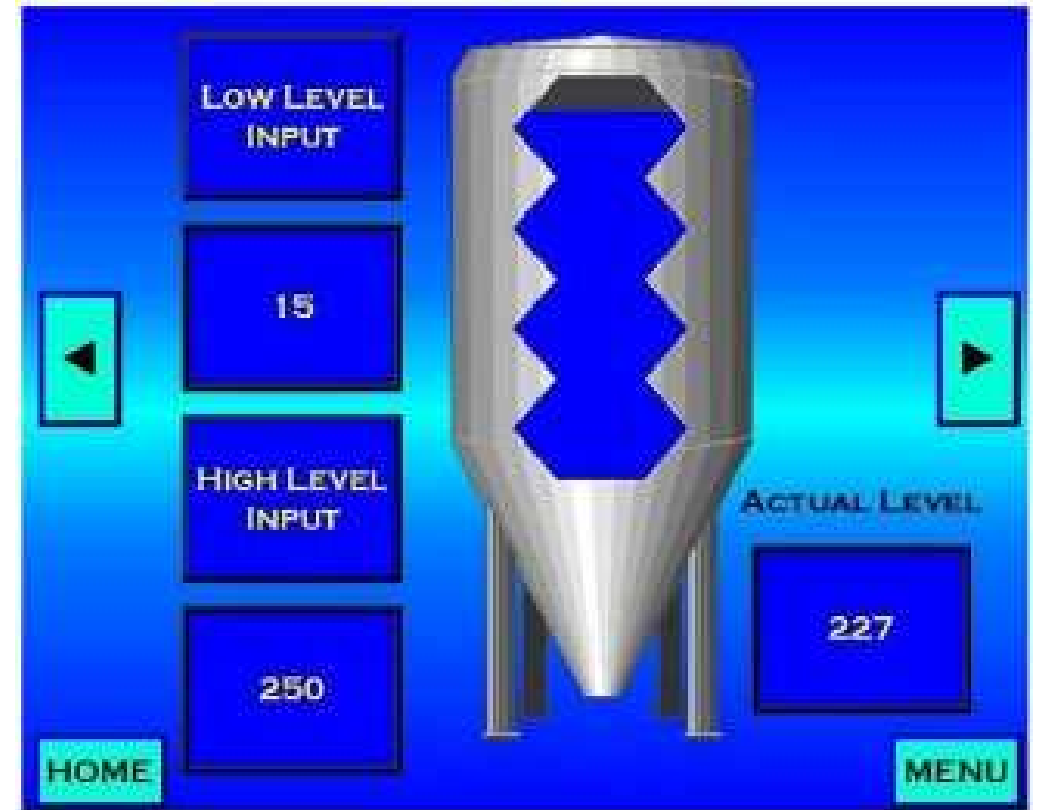


Allen Bradley MicroLogix PLC

Controls automated action of system
Electrical components house in NEMA4 cabinet
Pre-wired finger-safe terminal strips



Menu Screen:
Displays navigation to all functional screen options

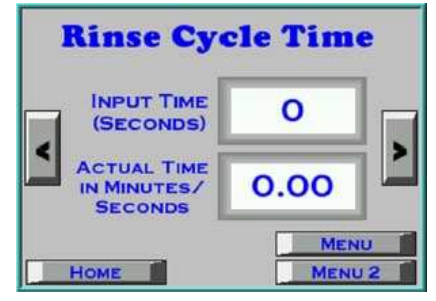
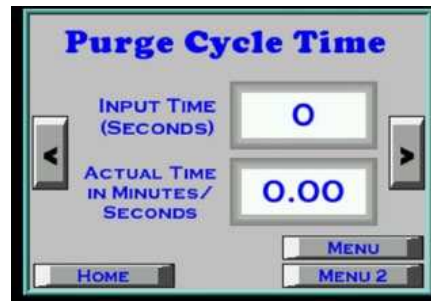
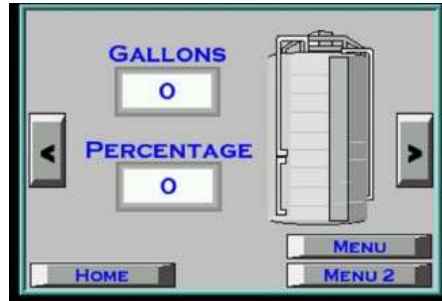


Actual fluid levels in the tank.

An alarm will occur and after the operator has reset the alarm, a 5-minute timer will start to allow the level to be corrected.

PROGRAMMABLE CONTROLS

SAMPLE SCREENS



OPTIONS

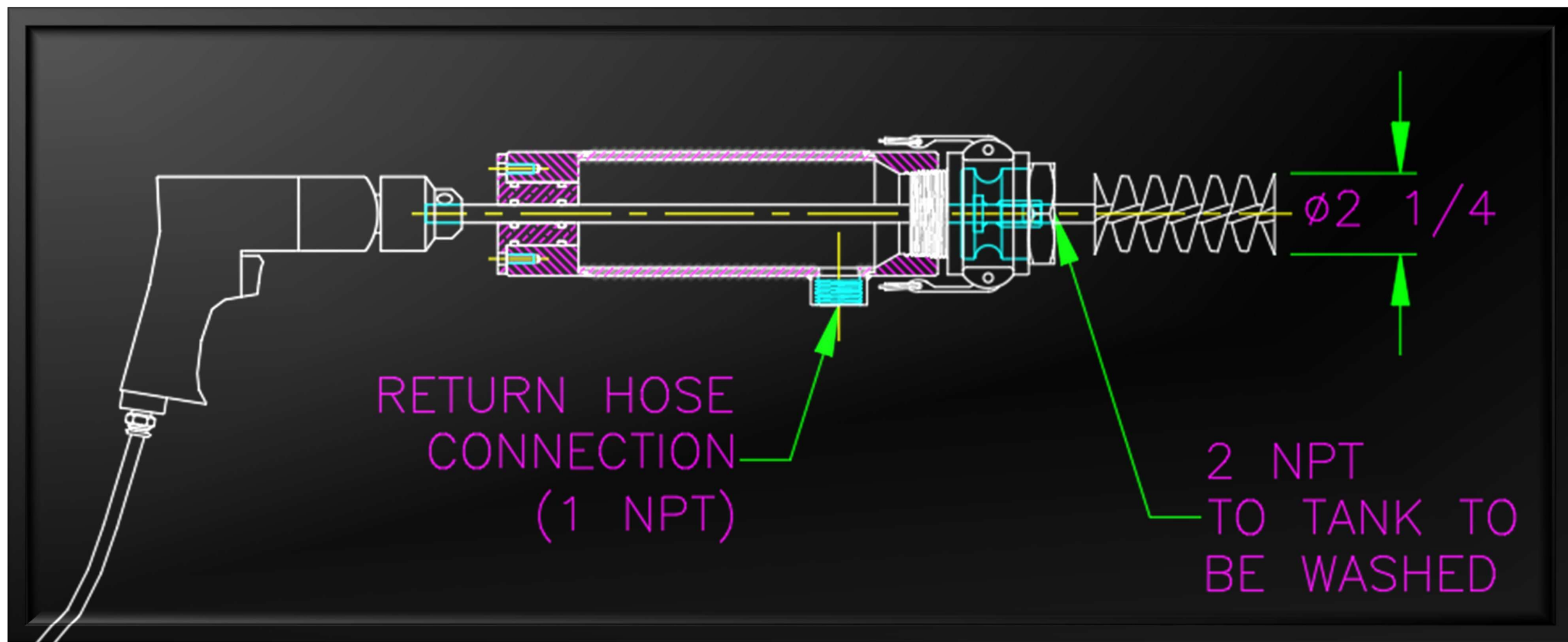
Additional PLC Display

- Can be installed on machine and in XP area
- Viewing window with display mirroring the PLC display
 - Fault displays
 - Machine cycle status
 - Machine setting



Tilt

- Designed to lift base 5" above floor level
- Pneumatic tilt assembly to assist in vessel drainage of left over solvent



Valve Cleaning Unit

SAFETY FEATURES

- ☐ **Canlock:** Locks all portable vessels securely to machine.
Adjustable t-bar design with ratchet strap
- ☐ **Canlock limit switch:** Activated when operator locks tank into place; machine will not operate without a secured tank
- ☐ **Proximity sensors:** Mounted inside head to sense any movement of the lid and brush assemblies Lid sensor to indicate cover is securely in place
- ☐ **Tank bottom indicator:** Manually adjusted bottom safety sensor to ensure safe downward travel of the brush assembly and avoiding bottom of the vessel
- ☐ **Earth-Rite II grounding system:** Static grounding system to be connected to building grounding system
- ☐ **Additional sensors:** Indicating valve positions (wash, rinse, air purge) and prevent operation when not in the correct position





FINANCIALLY SPEAKING

**CASE STUDIES IN
R.O.I
PAY-BACK-PERIOD**

PLASTISOL -		PROFESSIONAL TANK CLEANING SERVICE		CMX-200
OMS & DOTP BLEND	\$ 4.60 GAL	0	\$ -	6 \$ 27.60
LABOR/OH	\$72.00 HR	0	\$ -	0.5 \$ 36.00
HAZMAT DISPOSAL	\$ 1.20 GAL	0	\$ -	6 \$ 7.20
TOTAL COST PER TANK			\$ 145.00	\$ 70.80
NO. OF TANKS PER MONTH	120			
TOTAL MONTHLY COST			\$ 17,400.00	\$ 8,496.00
DIFFERENCE - SAVINGS/MO				\$ 8,904.00
CMX-200 COST				\$ 223,000.00
PAY-BACK-PERIOD (MONTHS)				25

LATEX PAINT -			MANUAL CLEANING		CMX-200	
WATER & SEB	\$ -			\$ -	SAME QTY	\$ -
LABOR/OH	\$58.00	HR	1.25	\$ 72.50		0.5 \$ 29.00
HAZMAT DISPOSAL	\$ -	GAL	0	\$ -		0 \$ -
TOTAL COST PER TANK				\$ 72.50		\$ 29.00
NO. OF TANKS PER MONTH	160					
TOTAL MONTHLY COST				\$ 11,600.00		\$ 4,640.00
DIFFERENCE - SAVINGS/MO					\$ 6,960.00	
CMX-200 COST					\$ 223,000.00	
PAY-BACK-PERIOD (MONTHS)					32	

SOLVENT BASED LACQUER -			MANUAL CLEANING		CMX-200
ACETONE & EA BLEND	\$ 4.60	GAL	11	\$ 50.60	6 \$ 27.60
LABOR/OH	\$62.00	HR	1.5	\$ 93.00	0.5 \$ 31.00
HAZMAT DISPOSAL	\$ 0.95	GAL	8	\$ 7.60	2 \$ 1.90
TOTAL COST PER TANK				\$ 151.20	\$ 60.50
NO. OF TANKS PER MONTH	320				
TOTAL MONTHLY COST				\$ 48,384.00	\$19,360.00
DIFFERENCE - SAVINGS/MO					\$ 29,024.00
CMX-200 COST					\$ 223,000.00
PAY-BACK-PERIOD (MONTHS)					8



CMX-200:
BECAUSE EVERY BATCH
DESERVES A CLEAN START.

-
- Contact us for a complimentary demo test at our facility



6 Kitty Hawk Lane
Elizabeth City, NC 27909
1-800-906-7278

sales@hockmeyer.com

parts@hockmeyer.com

www.Hockmeyer.com